

Three quarter circle carousel fitting with carousel shelves



- Area of application: For overlay doors
- Material: Spindle and surrounds: Steel, three quarter circle carousel shelves: Wood
- Finish/colour: Spindle and surrounds: Chrome plated, three quarter circle carousel shelves: Plastic coated white
- Version: With positioning facility, carousel shelf with non-slip effect, spindle can be cut at top up to a cabinet height of 480 mm
- Height: Adjustable from 839 – 889 mm
- Installation: For screw fixing between cabinet top and base

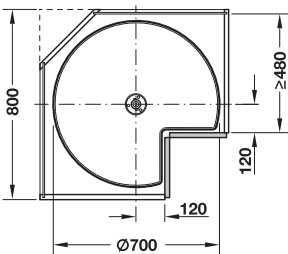


Classic

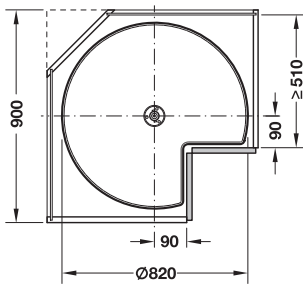


Style

Installation dimensions



Base unit 800 x 800 mm



Base unit 900 x 900 mm

Supplied with

- 1 Spindle with multiple perforations, Ø 25 mm
- 2 Three quarter circle carousel shelves with surrounds



For base unit mm	Diameter mm	Classic	Style
800 x 800	700	542.31.282	542.43.283
900 x 900	820	542.31.292	542.43.293

Packing: 1 set



Three quarter circle/full circle carousel fitting

90° doors or 45° diagonal doors



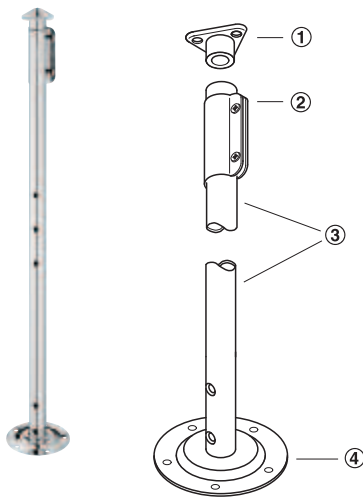
- Area of application: For overlay doors
- Version: For max. 2 carousel shelves, with fixed central spindle
- Functionality: Carousels swivel independently



6

Kitchen Cabinet Fittings

→ Spindle



- ① Upper axle bearing
- ② Height compensation bearing
- ③ Spindle
- ④ Lower axle bearing

- Material: Spindle, height compensation bearing and lower axle bearing: Steel, top axle bearing: Plastic
- Finish/colour: Spindle and lower axle bearing: Chrome plated, height compensation bearing: Galvanized, top axle bearing: White
- Installation: For screw fixing from beneath and above

Supplied with

- 1 Spindle with multiple perforations, Ø 25 mm
- 1 Height compensation bearing 50 mm
- 1 Upper axle bearing
- 1 Lower axle bearing

Height mm	Cat. No.
630 – 680	541.17.225
685 – 735	541.17.240

Packing: 1 set

→ Spindle, free standing



- Material: Steel
- Finish: Chrome plated
- Version: With feet
- Diameter: 25 mm
- Installation: For screw fixing to cabinet base

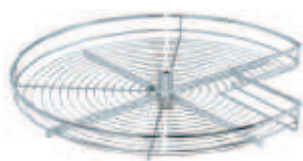
Height mm	Cat. No.
477	541.56.991

Packing: 1 piece

Wire carousels

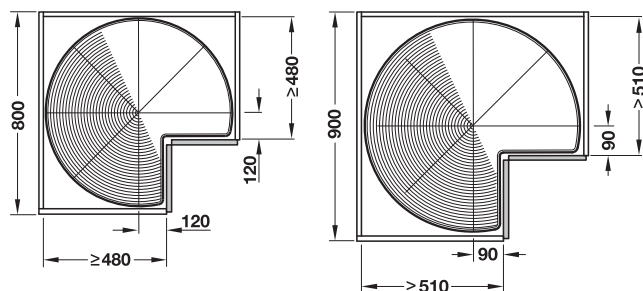
► FF 6.43

→ Three quarter circle wire carousel 90°



- Area of application: For 90° doors
- Material: Steel
- Finish: Chrome plated
- Version: With wire surrounds, plastic bearings, brake and arresting pin

Installation dimensions



Base unit 800 x 800 mm

Base unit 900 x 900 mm

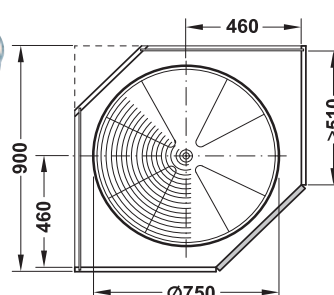
	For base unit mm	Diameter mm	Cat. No.
	800 x 800	700	541.18.222
	900 x 900	820	541.18.231

Packing: 1 piece

→ Full circle wire carousel 45°



Installation dimensions

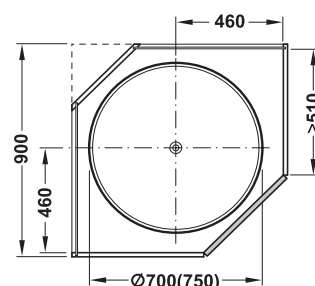


- Area of application: For 45° diagonal doors
- Material: Steel
- Finish: Chrome plated
- Version: With wire surrounds and plastic bearing

	For base unit mm	Cat. No.
	900 x 900	541.12.239

Packing: 1 piece

Full circle carousel fitting with carousel shelves



Style

Installation dimensions

- Area of application: For corner base unit 900 x 900 mm, for overlay doors 45°
- Material: Spindle and surrounds: Steel, Full circle carousel shelves: Wood
- Finish/colour: Spindle and surrounds: Chrome plated, full circle carousel shelves: Plastic coated white
- Version: Carousel shelf with non-slip effect, spindle can be cut at top up to a cabinet height of 480 mm
- Height: Adjustable from 839 – 889 mm
- Load bearing capacity: max. 20 kg (per shelf)

Supplied with

- 1 Spindle with multiple perforations, Ø 25 mm
- 2 Full circle carousel shelves

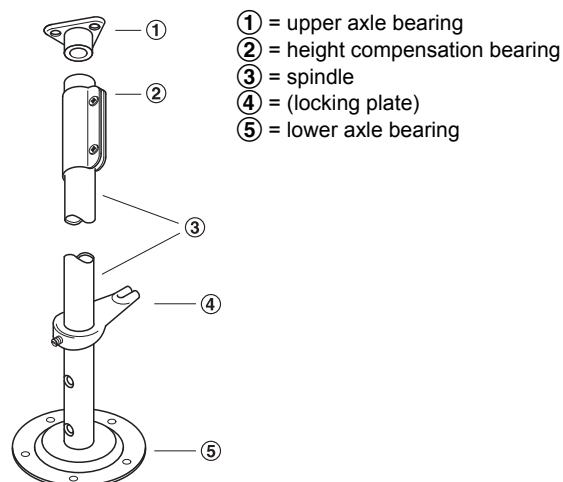
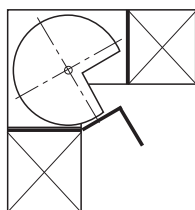
	Version	Diameter mm	Cat. No.
	Classic	750	542.32.292
	Style	700	542.32.272

Packing: 1 set



6

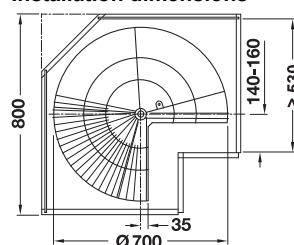
Three quarter circle carousel fitting with wire carousels



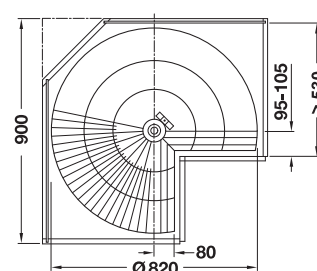
Spindle height adjustable/can be cut to size

- Area of application: For corner base unit 800 x 800 mm or 900 x 900 mm, for overlay doors
- Material: Spindle, height compensation bearing, tube, lower axle bearing and wire carousels: Steel, top axle bearing: Plastic
- Finish: Wire carousels, spindle and lower axle bearing: Chrome plated, height compensation bearing: Galvanized, top axle bearing: White
- Version: Spindle with multiple perforations, carousel with wire surrounds and plastic bearing
- Functionality: Carousels swivel independently
- Height adjustment: max. 50 mm
- Installation: For screw fixing
- Height H: Spindle 830 – 880 mm, can be cut to size

Installation dimensions



Base unit 800 x 800 mm



Base unit 900 x 900 mm

Supplied with

- 2 Wire carousels
- 1 Spindle
- 1 Height compensation bearing (supplied with the carousel shelves)
- 1 Top axle bearing
- 1 Bottom axle bearing

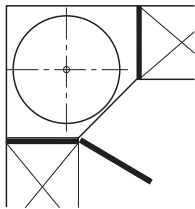
For base unit mm	Basket Ø mm	Cat. No.
800 x 800	700	542.53.202
900 x 900	820	542.53.203

Packing: 1 piece



2 three quarter circle wire carousels with spindle

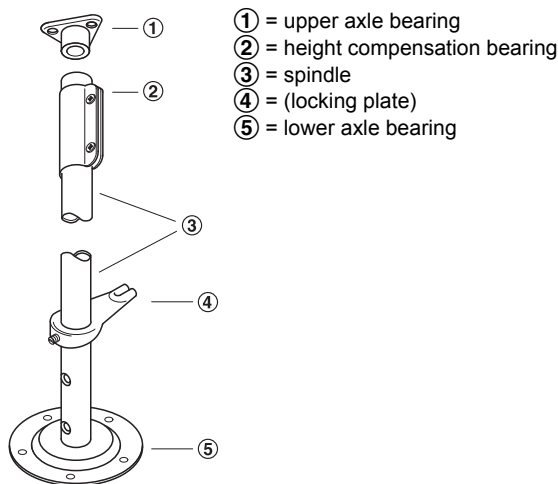
Full circle carousel fitting with wire carousels



- Area of application: For corner base unit 900 x 900 mm, for overlay doors
- Material: Spindle, height compensation bearing, tube, lower axle bearing and wire carousels: Steel, top axle bearing: Plastic
- Finish: Wire carousels, spindle and lower axle bearing: Chrome plated, height compensation bearing: Galvanized, top axle bearing: White
- Version: Spindle with multiple perforations, can be cut at top, wire carousel with wire surrounds and plastic bearings
- Functionality: Carousels swivel independently
- Installation: For screw fixing
- Height: Spindle 830 – 880 mm, can be cut to size

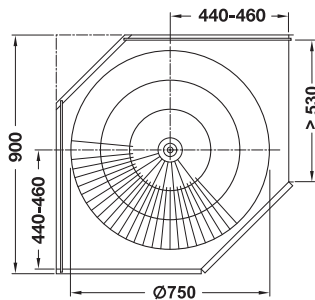


2 full circle wire carousels with spindle



Spindle height adjustable/can be cut to size

Installation dimensions



Base unit 900 x 900 mm

Supplied with

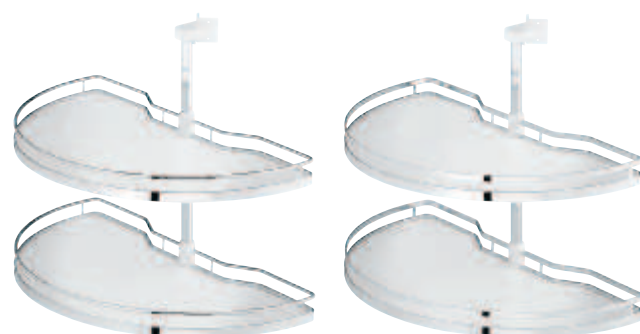
- 2 Wire carousels
- 1 Spindle
- 1 Height compensation bearing (supplied with the wire carousels)
- 1 Top axle bearing
- 1 Bottom axle bearing

For base unit mm	Basket Ø mm	Cat. No.
900 x 900	750	542.54.202

Packing: 1 piece



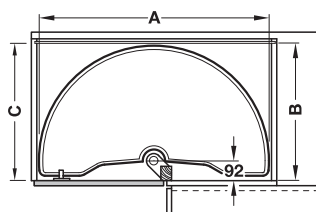
Half circle carousel fitting with carousel shelves



Classic

Style

Installation dimensions



- Area of application: For hinged overlay doors
- Finish/colour: Spindle and surrounds: Chrome plated, half circle carousel shelves: Plastic coated white, follower: Nickel plated
- Version: Carousel shelf with non-slip effect
- Height: 565 mm including fixing components
- Installation: For screw fixing to centre post

Supplied with

- 1 Spindle with multiple perforations, \varnothing 25 mm
- 2 Half circle carousel shelves
- 1 Follower



For door width mm	Dim. A mm	Dim. B mm	Dim. C mm	Classic	Style
from 440	750	420	min. 475	542.30.221	542.30.241
from 490	850	470	min. 525	542.30.231	542.30.251

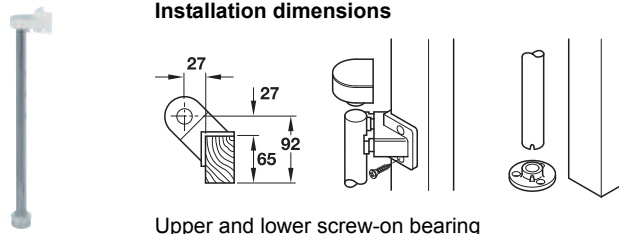
Packing: 1 set

Half circle carousel fitting

- Area of application: For hinged overlay doors
- Version: For max. 2 wire carousels

→ Spindle

Installation dimensions



Upper and lower screw-on bearing

- Material: Spindle: Steel, bearing components: Plastic
- Finish/colour: Spindle: Chrome plated, bearing components: White
- Version: Can be shortened
- Installation: Top for screw fixing to centre post, bottom for mounting in drilled hole and screw fixing to base

Supplied with

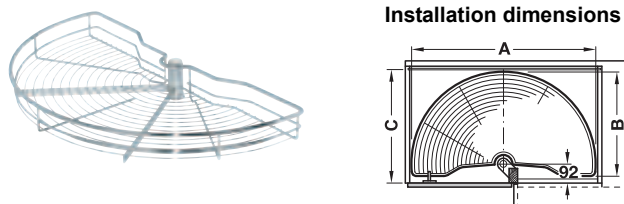
- 1 Spindle with multiple perforations, \varnothing 25 mm
- 1 Upper screw-on bearing
- 1 Lower screw-on bearing

Height mm	Cat. No.
495	541.19.292
652	541.19.294

Packing: 1 set

→ Half circle wire carousel

Installation dimensions



- Material: Wire carousel: Steel, bearing components: Plastic
- Finish/colour: Wire carousel: Chrome plated, bearing components: White
- Version: With axle bearing, support ring and pin, for mounting on spindle

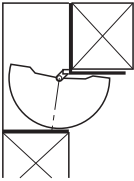
	For door width mm	Dim. A mm	Dim. B mm	Dim. C mm	Cat. No.
	440	750	420	min. 475	541.19.229
	490	850	465	min. 525	541.19.247

Packing: 1 piece

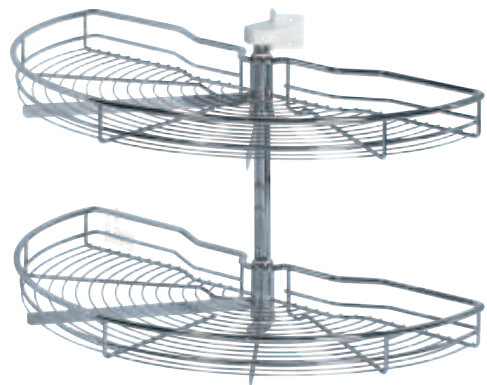
Half circle wire carousel follower

► FF 6.47

Half circle carousel fitting with wire carousels

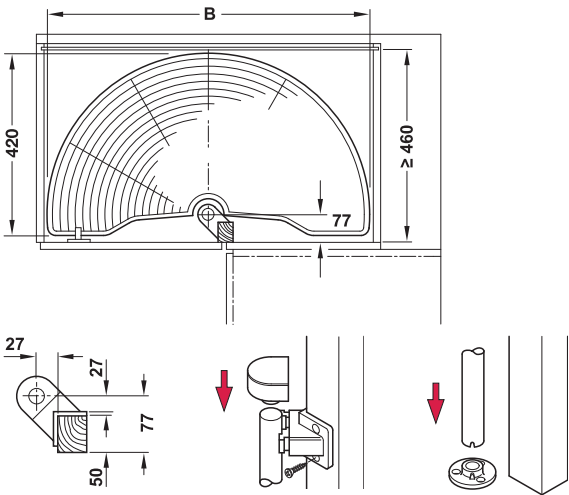


- Area of application: For overlay doors
- Material: Spindle and wire carousels: Steel, bearing components: Plastic
- Finish: Wire carousels, spindle and lower axle bearing: Chrome plated, height compensation bearing: Galvanized, top axle bearing: White
- Version: Spindle with multiple perforations, can be cut to size, carousels with wire surrounds, plastic bearings, brake and arresting pin
- Installation: Top for screw fixing to centre post, bottom for mounting in drilled hole and screw fixing to base
- Height: Spindle 495 mm



2 half circle wire carousels with spindle

Installation dimensions



Upper and lower screw-on bearing

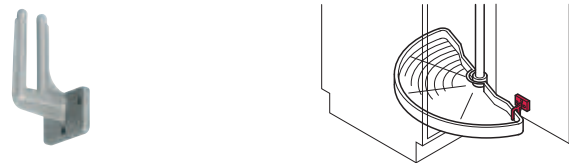
Supplied with

- 2 Wire carousels with bearings
- 1 Spindle
- 1 Upper screw-on bearing
- 1 Lower screw-on bearing

For base unit mm	Width B mm	Cat. No.
900 x min. 460	750	542.52.202
1000 x min. 460	850	542.52.203

Packing: 1 piece

→ Wire carousel follower



- Colour: White aluminium, RAL 9006
- Installation: For screw fixing to door

Material	Cat. No.
Plastic	541.19.283

Packing: 1 or 10 pieces



Internal pull-out for wall unit

For installation behind hinged doors



- Material: Steel
- Finish/colour: Frame: Plastic coated, white aluminium, RAL 9006, runners: Galvanized
- Version: Hanging frame with row of hooks at one side and top and bottom runner
- Type of pull-out: Full extension with self closing and soft closing mechanisms
- Load bearing capacity: 20 kg
- Internal installation height: 870 mm
- Internal cabinet depth: ≥500 mm
- Installation: For screw fixing between cabinet top and base panel
- Dim.: Frame: 465 x 857 mm

Supplied with

- 1 Hanging frame
- 1 Runner system

Mounting	Cat. No.
Left and right	545.78.231

Packing: 1 piece

Order reference



Please order hanging baskets and hook-in shelves separately.



6

Kitchen Cabinet Fittings



Hanging basket (straight version)	► FF 6.19
Hook-in shelf (straight version)	► FF 6.20

Parallel foldaway fitting

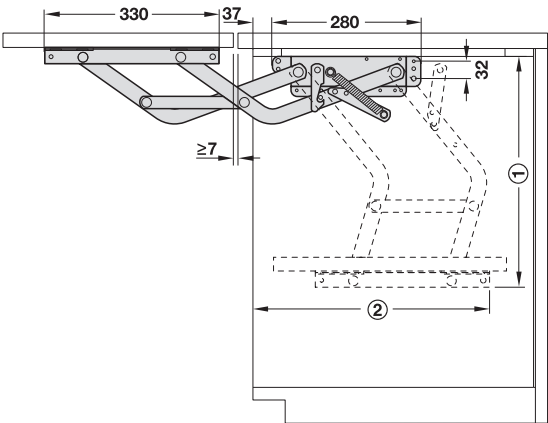
→ Load bearing capacity 8 kg

Can be used irrespective of width, for screw fixing to side panel

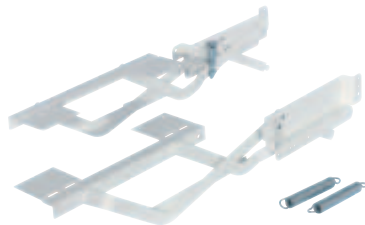
Vitaflex



Installation dimensions



① Installation height, ② Swivel depth
In fully extended position the shelf is flush with the worktop.



Functionality

- Locking: Automatically after swivelling out
- Releasing: By lifting the shelf

- Material: Steel
- Finish/colour: White lacquered, RAL 9010
- Version: With cranked screw-on plates for compensating the door offset
- For internal cabinet width: ≥ 300 mm, ≤ 568 mm

Supplied with

- 1 Pair of fitting components (left and right) with 150 N tension springs
- 1 Set of installation instructions

Effective height mm	Quantity	Load bearing capacity kg	Installation height mm	Swivel depth mm	Cat. No.
280	2 springs	8	445	425	504.22.421

Packing: 1 set

Replacement parts

	Cat. No.
Tension spring 150 N	504.22.994

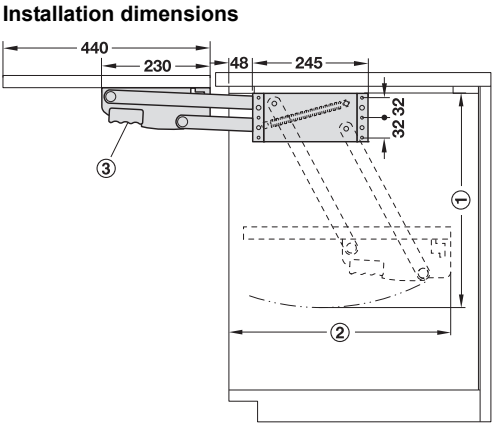
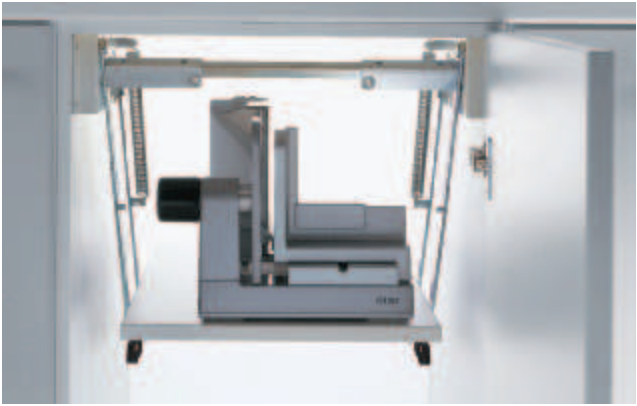
Packing: 1 piece



6

Kitchen Cabinet Fittings

→ **Load bearing capacity 8 or 10 kg**
For screw fixing to side panel



① Installation height, ② Swivel depth, ③ Handles



Functionality

- Locking: Automatically after swivelling out
- Releasing: Using concealed plastic handles

Note

Cross bar can be shortened when used with the right and left cross bar support.

- Material: Steel
- Finish/colour: Plastic coated white, RAL 9010
- Installation width: 410 – 570 mm

Effective height mm	Quantity	Load bearing capacity kg	Installation height mm	Swivel depth mm	Cat. No.
180	2 springs	8	455	440	504.18.758
240	2 springs	8	505	468	504.18.767
240	4 springs	10	505	468	504.18.776

Packing: 1 set

Replacement parts

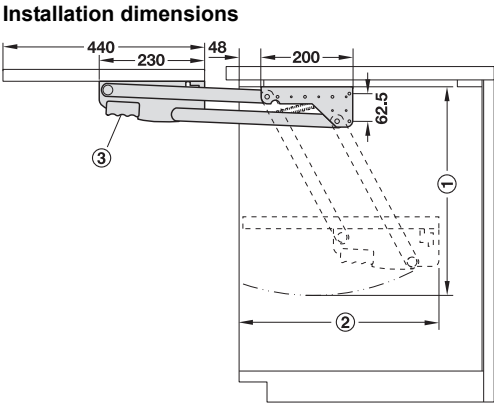
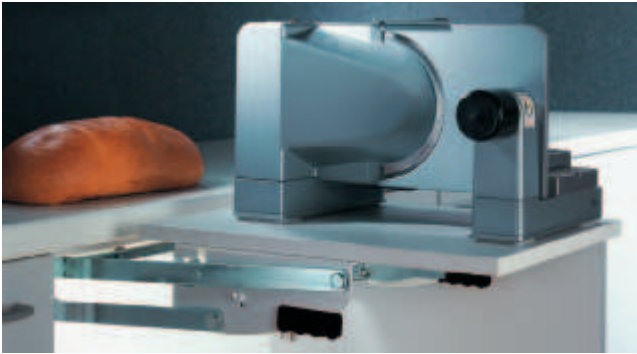
	Cat. No.
Tension spring 150 N	504.17.900
Handle	504.17.910

Packing: 1 piece

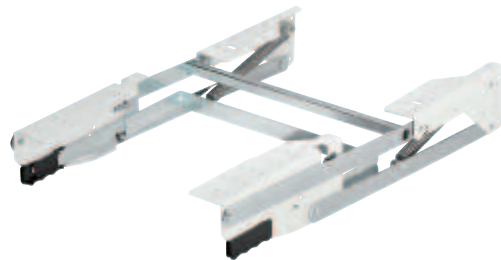


→ **Load bearing capacity 8 kg**
For screw fixing beneath cabinet top

Vitaflex

① Installation height, ② Swivel depth, ③ Handles
In fully extended position the shelf is flush with the worktop.



- Material: Steel
- Finish/colour: Plastic coated white, RAL 9010
- For cabinet width: ≥ 450 mm
- Installation width: min. 375 mm
- Supplied with: Installation instructions

- Functionality**
- Locking: Automatically after swivelling out
 - Releasing: By lifting the shelf

Effective height mm	Quantity	Load bearing capacity kg	Installation height mm	Swivel depth mm	Cat. No.
264	2 springs	8	455	495	504.17.706

Packing: 1 set

Replacement parts

	Cat. No.
Tension spring 150 N	504.17.900
Handle	504.17.910

Packing: 1 piece

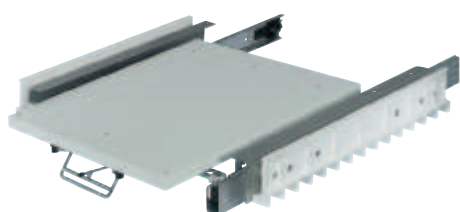


Pull-out table fitting

Vitaflex




→ Load bearing capacity 20 kg
Without worktop



A

For small, compact kitchens for temporary extension of the working surface

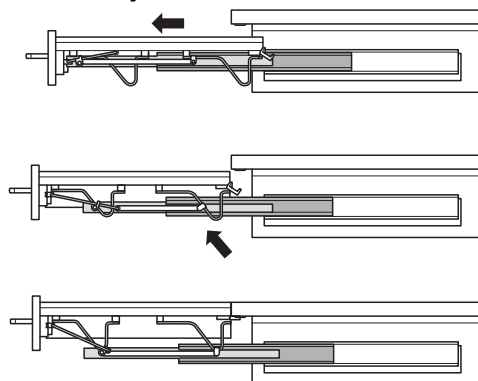


6

Kitchen Cabinet Fittings

- Material: Pull-out elements: Steel, lateral supports: Plastic
- Finish/colour: Pull-out elements: Plastic coated, white aluminium, RAL 9006, lateral supports: Grey
- For cabinet width: 600 mm
- Internal cabinet width: 568 mm with side panel thickness 16 mm, 562 mm with side panel thickness 19 mm
- Internal cabinet height: min. 125 mm

Functionality



Installation reference

An insert with dimensions of 555 x 460 x 15 – 19 mm (W x D x H) is needed for the pull-out table fitting.

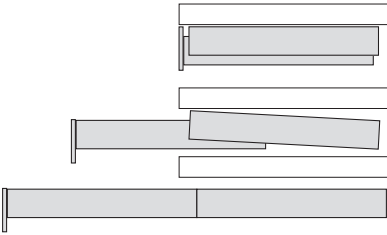
Internal cabinet depth mm	Extension length mm	Cat. No.
min. 500	585	505.71.900

Packing: 1 set

→ Load bearing capacity 30 kg

Vitaflex

Functionality



Without worktop



- Material: Steel
- Finish/colour: Galvanized or plastic coated, white aluminium, RAL 9006
- Version: Front panel automatically drops to level of additional worktop, with side panelling to conceal the fittings
- For cabinet width: 450 – 900 mm

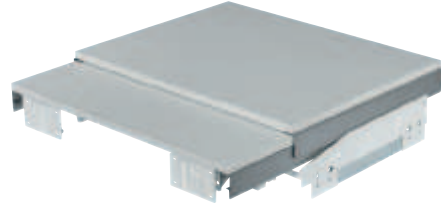
Supplied with

- 1 Pull-out table fitting
- 1 Set of installation instructions

Internal cabinet depth mm	Extension length mm	Cat. No.
min. 400	610	505.70.210
min. 500	810	505.70.200

Packing: 1 set

With worktop



- Material: Worktop: Chipboard, pull-out: Steel
- Finish/colour: Worktop: Plastic coated white, pull-out: Galvanized, white aluminium, RAL 9006
- Version: Worktop with thick edge
- For cabinet width: 600 mm
- Side panel thickness: 16 or 19 mm
- For internal cabinet height: min. 155 mm

Supplied with

- 1 Pull-out table fitting with worktop
- 2 Spacers for side panel compensation
- 1 Set of installation instructions

Internal cabinet depth mm	Extension length mm	Cat. No.
min. 500	810	505.70.207

Packing: 1 set



6

Kitchen Cabinet Fittings

Drainer grill and tray

For draining dishes



- Material: Drainer tray: Plastic, drainer grill: Steel
- Finish/colour: Drainer grill: Chrome plated, side panel bearing: Grey
- Height: 200 mm
- Depth: 276 mm
- For side panel thickness: 16 mm

Supplied with

- 1 Drainer grill and tray, flat
- 1 Drainer grill and tray, deep
- 4 Side panel bearings

	For cabinet width mm	Width mm	Cat. No.
	500	468	544.06.203
	600	568	544.06.204
	800	768	544.06.206
	900	868	544.06.207

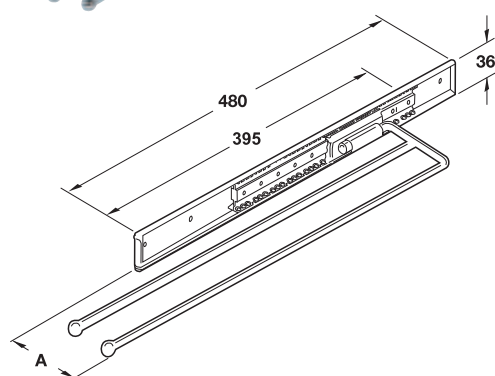
Packing: 1 piece

6

Towel rail

→ With pull-out runner

2 or 3 rail version



Cover



- Material: Steel
- Finish: Chrome plated polished
- Version: Extending, swivelling
- Length: 495 mm
- Extension length: 395 mm
- Diameter: Rail Ø: 7.95 mm, ball head Ø: 12 mm
- Mounting: Suitable for left and right hand use
- Installation: For lateral or top screw fixing

Functionality

Towel rail can be swivelled by loosening the retaining screw.

Version	Dim. A mm	Cat. No.
2 rails	102	510.37.220
3 rails	145	510.37.239

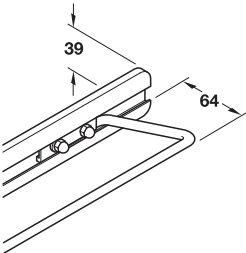
Packing: 1 piece

- Area of application: For covering runners
- Material: Plastic
- Colour: White, RAL 9010

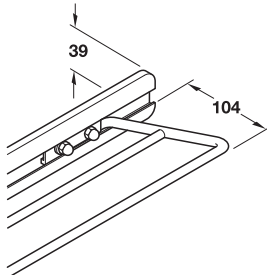
Installation	Cat. No.
For clip fixing	510.37.790

Packing: 1 piece

→ With pull-out runner
1 or 2 rail version



With 1 rail



With 2 rails

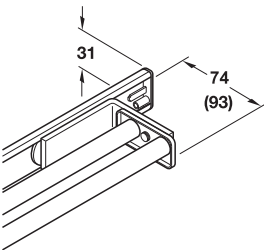
- Material: Runner: Steel, cover: Plastic
- Finish: Rails and cover: Chrome plated, runners: Galvanized
- Version: Extending
- Length: Runners 260 mm, extension: 165 mm
- Diameter: Rail Ø: 7.95 mm, ball head Ø: 12 mm
- Mounting: For left and right hand use
- Installation: For screw fixing

Version	Installation	Length	
		325 mm	410 mm
1 rail	Side or top mounted	510.36.214	510.36.223
2 rails	Side mounted	510.36.232	510.36.241

Packing: 1 piece



1 or 2 rail version



- Material: Runner and rails: Aluminium, running gear: Plastic
- Version: Extending, 2 rail version can be swivelled by 90°
- Length: 330 mm
- Extension length: 160 mm
- Installation: For lateral or top screw fixing
- Supplied with: Fixing material

Functionality

With 2 rail version the towel rail can be swivelled by 90° by loosening the retaining screw.

Version	Chrome coloured polished	Silver coloured anodized
1 rail	510.51.214	510.51.914
2 rails	510.51.224	510.51.924

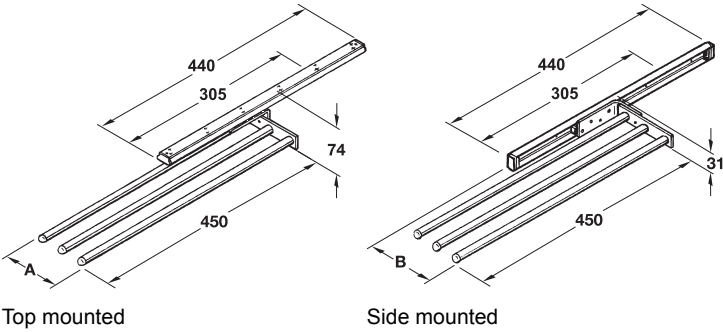
Packing: 1 piece

1, 2 or 3 rail version



- Material: Runner and rails: Aluminium, end caps: Plastic
- Version: Extending, 2 or 3 rail versions can be swivelled by 90°
- Length: 465 mm
- Extension length: 305 mm
- Installation: For lateral or top screw fixing
- Supplied with: Fixing material

Installation dimensions



Towel rail version	Top mounted dim. A mm	Side mounted dim. B mm
1 rail	31	53
2 rails	65	93
3 rails	110	138

Functionality

2 and 3 rail version can be swivelled by 90° by loosening the retaining screw.

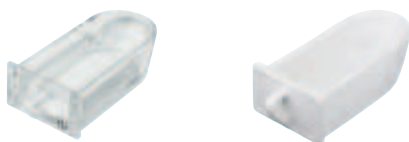
Version	Plastic coated white	Silver coloured anodized	Chrome coloured polished
1 rail	510.50.715	510.50.915	510.50.215
2 rails	510.50.725	510.50.925	510.50.225
3 rails	510.50.735	510.50.935	510.50.235

Packing: 1 piece



6

Spice scoop



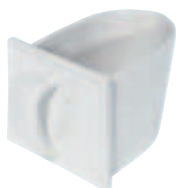
- Contents: 0.22 litres
- Dim. (W x D x H): External dimensions: 80 x 173 x 46 mm (with handle), internal insertion dimensions: 70 x 150 x 40 mm

	Cat. No.
Lead crystal glass, glass clear	543.95.010
Ceramic, cream white	543.95.410

Packing: 1 piece

Kitchen scoops

→ Ceramics



- Colour: White
- Dim. (D x H): External dimensions: 185 x 105 mm (with handle), internal insertion dimensions: 150 x 100 mm

Width mm	For internal width mm	Contents l	Cat. No.
115	100	0.75	543.90.720
130	118	0.90	543.95.411

Packing: 1 piece

→ Lead crystal glass, with smooth front



- Finish: Glass clear
- Dim. (D x H): External dimensions: 185 x 105 mm (with handle), internal insertion dimensions: 150 x 100 mm

Width mm	For internal width mm	Contents l	Cat. No.
115	100	0.75	543.95.000
130	118	0.90	543.95.020

Packing: 1 piece

→ Lead crystal glass, with grooved front



- Finish: Grooved (glass clear)
- Dim. (W x D x H): External dimensions: 115 x 185 x 105 mm (with handle), internal insertion dimensions: 100 x 150 x 100 mm

Contents l	Cat. No.
0.75	543.95.001

Packing: 1 piece

→ Plastic



- Finish: Glass clear
- Dim. (W x D x H): 120 x 140 x 85 mm

Contents l	Cat. No.
1	543.26.491

Packing: 1 piece

Dispenser unit



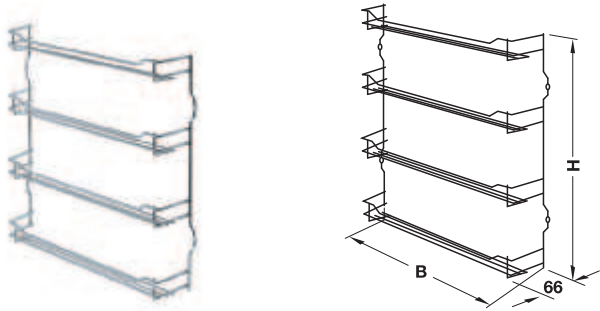
- Material: Plastic
- Colour: White housing, brown transparent scoops
- Contents: 1 litre per scoop
- Installation: For screw fixing to shelf

	Cat. No.
Dispenser unit with 3 scoops, 256 x 151 x 144 mm	543.26.756
Scoop, 81 x 143 x 127 mm	543.26.482

Packing: 1 piece

Spice rack

→ Steel, chrome plated

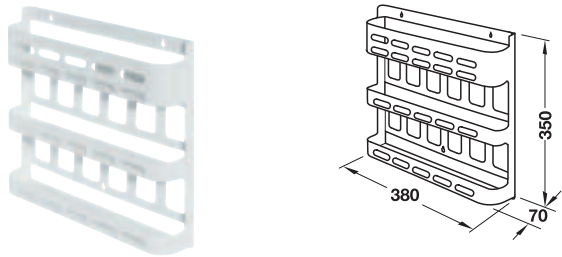


- Area of application: For spice jars Ø 55 mm
- Installation: For screw fixing to the wall

Dim. (W x H) mm	Number of tiers	Cat. No.
244 x 404	4 tiers, each for 3 jars	543.19.260
390 x 404	4 tiers, each for 6 jars	543.19.280
531 x 283	3 tiers, each for 8 jars	543.19.250

Packing: 1 piece

→ Plastic, white

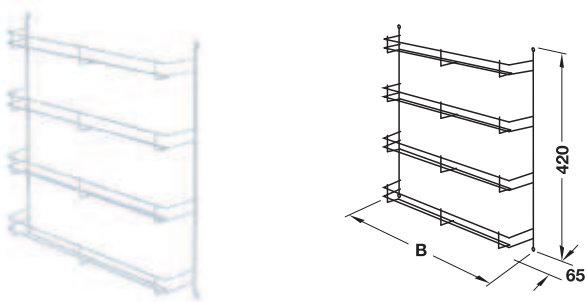


- Area of application: For spice jars Ø 55 mm
- Installation: For screw fixing to inner side of door or wall

Dim. (W x D x H) mm	Number of tiers	Cat. No.
380 x 70 x 350	3 tiers	543.14.706

Packing: 1 or 4 pieces

→ Steel, plastic coated, white



- Area of application: For spice jars Ø 55 mm
- Installation: For screw fixing to the wall

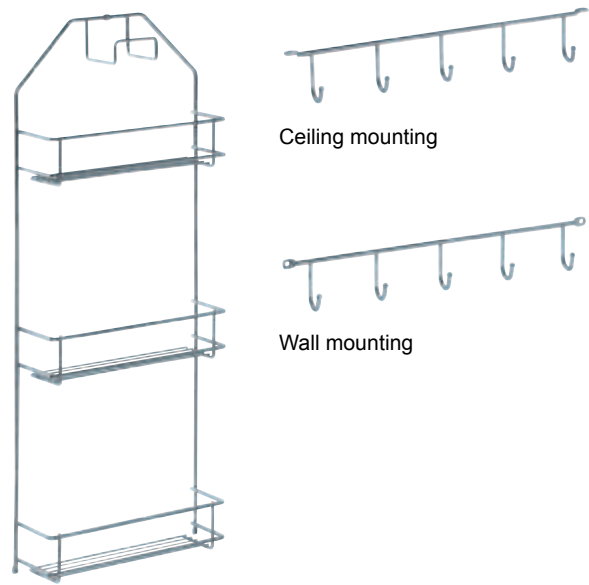
Dim. B mm	Number of tiers	Cat. No.
200	4 tiers, each for 3 jars	543.18.053
375	4 tiers, each for 6 jars	543.18.026

Packing: 1 piece



6

Broom cupboard equipment set 1
With hose holder



- Area of application: In broom cupboard for vacuum cleaner hose and accessories
- Material: Steel
- Finish: Chrome plated polished
- Version: With screw holes
- Dim. (W x D x H): Broom cupboard shelf: 300 x 83 x 765 mm, hook rail: 350 x 30 x 50 mm
- Installation: For screw fixing
- Internal distance top shelf: 204 mm, centre and bottom shelf: 264 mm

Supplied with
1 Broom cupboard shelf with hose holder
1 Hook rail for ceiling mounting
1 Hook rail for wall mounting

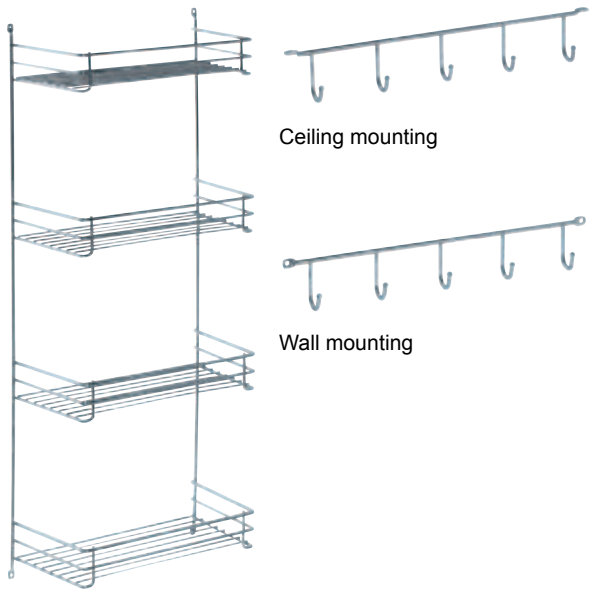
	Cat. No.
Broom cupboard equipment set 1	520.00.201

Packing: 1 piece



Complete set for vacuum cleaner hose, accessories, towels, cloths and shoe care utensils

Broom cupboard equipment set 2



- Area of application: In broom cupboard
- Material: Steel
- Finish: Chrome plated polished
- Version: With screw holes
- Dim. (W x D x H): Broom cupboard shelf: 355 x 175 x 872 mm, hook rail: 350 x 30 x 50 mm
- Installation: For screw fixing
- Internal distance top shelf, centre shelf and bottom shelf: 242 mm

Supplied with
1 Broom cupboard shelf
1 Hook rail for ceiling mounting
1 Hook rail for wall mounting

	Cat. No.
Broom cupboard equipment set 2	520.00.202

Packing: 1 piece



Complete set for organising cleaning utensils

Railing system with round tube



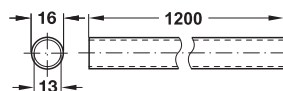
- Version: Components can be individually positioned, seamless round tube

Application



- A wide range of accessories can simply be hooked in.
- Stylish support determines the distance to the wall.
- Railing tube can be cut to required size and is closed off using the end piece.
- Plastic caps prevent unintentional movements and scratches on walls and railings.

→ Railing tube

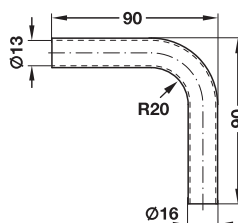


- Material: Steel

Finish	Cat. No.
Chrome plated matt	521.15.429
Chrome plated polished	521.15.223

Packing: 1 piece

→ Railing tube, angled 90°

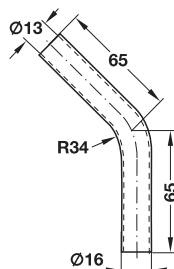


- Material: Steel

Finish	Cat. No.
Chrome plated matt	521.16.417
Chrome plated polished	521.16.211

Packing: 1 piece

→ Railing tube, angled 135°

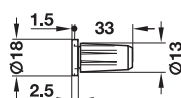


- Material: Steel

Finish	Cat. No.
Chrome plated matt	521.16.426
Chrome plated polished	521.16.220

Packing: 1 piece

→ End piece



- Material: Zinc alloy, press-in dowel: Plastic

Finish	Cat. No.
Chrome plated matt	521.16.499
Chrome plated polished	521.16.293

Packing: 1 piece